

# ARTICULIGHT

15-06 Morlot Avenue, Fair Lawn, NJ 07410 USA Tel: (201) 796-2690 Fax: (201) 796-8818

info@articulight.com

articulight@aol.com

www.articulight.com

## LED SERIES

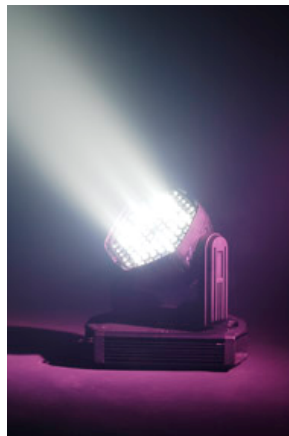
---

### MX VEGA LED MOVING HEAD



#### CONTROL FEATURES

- 10 or 14-channel DMX-512 LED moving yoke color wash
- Pan: 540° / Tilt: 270° ; Pan/Tilt Speed; Pan/Tilt Blackout
- RGBW color mixing with or without DMX controller
- Variable electronic strobe
- Variable electronic dimmer (0 – 100%)
- Remote fixture reset and vector speed channel
- 255 user-programmable steps without DMX controller
- Color temperature presets (3,200°K - 10,000°K) or create your own
- Adjustable fan speed



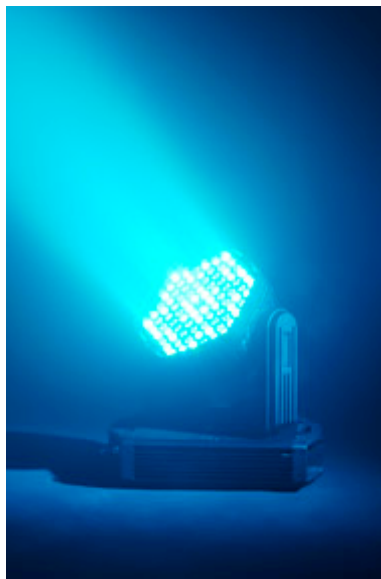
#### ADDITIONAL FEATURES

- High-powered, 2W/5W (600mA red, 1,300mA green, blue, white) LEDs
- 3-pin and 5-pin DMX connections
- User-selectable pan/tilt ranges
- Automatic pan/tilt correction
- Reset to factory settings option
- User-selectable basic or advanced operating modes
- LCD display with password protection
- RGBW color mixing/Custom programs/Strobe/white Balance/RGB to White /RGB Calibration/Dimmer/Fan speed control/Color macros



#### OPTIONS

- Optical systems available: 15° (installed), 10° and 30° optional



#### SPECIFICATIONS

- Beam angle: 12°
- Field angle: 25°
- Lux: 14,780 @ 2m
- Light source: 90 (18 2W red, 24 5W green, 24 5W blue, 24 5W white) LEDs 50,000 hours
- Power and current: 120V, 60Hz: 550W, 4.3A operating, 4.1A inrush, PF 0.99
- AC power: Switchable 100V-240V 50/60Hz
- Weight: 44.66 lbs (20.3 kg)
- Dimensions: 17in x 14.5in x 15.5in (432mm x 368mm x 394mm)
- Cooling: Forced air convection
- LCD Display Panel
- Automatic/Custom
- Stand-alone/Slave
- Pix Controller

DUE TO CONTINUOUS IMPROVEMENTS, SPECIFICATIONS MAY CHANGE WITHOUT PRIOR NOTICE.