

ARTICULIGHT

15-06 Morlot Avenue, Fair Lawn, NJ 07410 USA Tel: (201) 796-2690 Fax: (201) 796-8818

info@articulight.com

articulight@aol.com

www.articulight.com

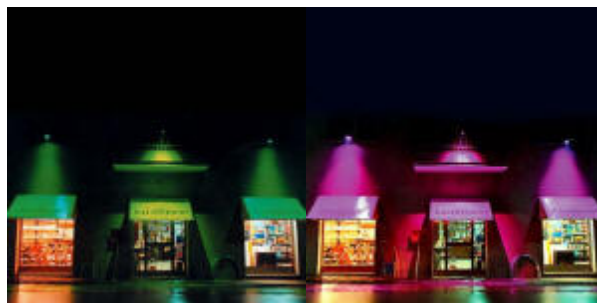
ARCHITECTURAL COLOR CHANGERS

RISALTO 150™



Completing our pioneering range for the architectural lighting market, the new Risalto provides colour change in an ultra compact weatherproofed housing (IP65 certified). Utilising the CMD-SA/T 150W metal halide 9000 hour lamp, RISALTO projects a bright wide angle wash effect with 8 selectable colours and white, plus black-out, with inbuilt auto change or controllable via 1 channel of DMX, and is ideal for a whole host of applications, indoor and outdoor. Multiple units can be synchronised for an even more spectacular effect. An expansion lens and a Fresnel lens are options for different beam angles.

A version of the Risalto - Risalto HFT- is available fitted with a wireless DMX receiver, for trouble free control of large or otherwise awkward installations where the running of DMX signal cable from the control system to the projector could be problematic. This system requires the use of our wireless DMX transmitter.



Lamp (included)
150W, 12900 lm, 4200°K
Metal halide lamp CDM-SA/T 150
Average rated life 9000 hours

G12 base.

Standards

Pressure diecast aluminium body, with an adjustable mounting yoke. Scratch resistant textured polyester grey finish, which protects against UV deterioration and general corrosion.

Front tempered glass shock resistant.

Certified IP65 weather protection

Electrical class: I .

Shock resistance: 0.8J.

Maximum ambient temperature: 35°C.

Maximum operational temperature: 90°C.

Product in compliance with CEI EN 60598-1 and CEI EN 60598-2-5.

Optical Group

The optical system utilises an aluminium parabolic reflector and produces a soft edge beam of approximately 42°

Colour Changing System

1 rotating wheel for 8 different colours (including UV filter) plus white .

Blackout

100% black-out (on colour wheel) available via DMX control.

Control

All functions can be accessed through 1 standard DMX 512 channel. Master/slave option for multiple units synchronisation.

Stand alone function and scenes speed adjustment.

Cooling

An internal axial fan 80x80 mm keeps the level of heat within the unit constant and helps dissipation through the metal body, which assists lamp life and protects internal components and reflectors from heat damage.

Power Supply

230V, 50Hz, 0.8 Amp

Thermal protection.

IP65 certified termination box for the entry of both the 220-240V power supply cables and the DMX signal cables.

