



15-06 Morlot Avenue, Fair Lawn, NJ 07410 USA Tel: (201) 796-2690 Fax: (201) 796-8818

info@articulight.com

articulight@aol.com

www.articulight.com

## LIGHTING CONTROL SYSTEMS

---

### V-TOUCH



#### Specifications

- Full-screen mode
- Password protection
- 100% Touch Screen optimized

#### Minimal Requirements

- Microsoft Windows
- Pentium CPU or equivalent
- 5 MB disk space
- Touch screen is recommended but not required

#### Overview

V-Touch is a further extension to VDMX. It is a free, standalone software application that can trigger events within the Canvix controller. V-Touch is equipped with a User Interface especially designed for use with Touch Screens. This makes it an ideal companion to Canvix when applied in a fixed installation, using V-Touch to run Patterns and control layers, or any other feature in VDMX.

V-Touch is designed to have no editing capability, making it a fool-proof interface that can safely be presented to non lighting technicians. In a typical installation bar staff may be left to control any changes in the environment. With V-Touch they can simply select the required function button on the touch screen to make such changes, without room for error.

## REMOTE CONNECTION



The software is capable of communicating with the lighting control software locally (on the same computer) and remotely (over the network or internet).

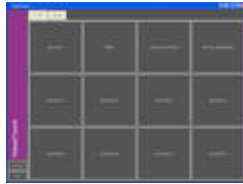
## NIGHT VISION



The User Interface can optionally be set into a 'Nightvision' mode, optimized for dark environments.  
Images



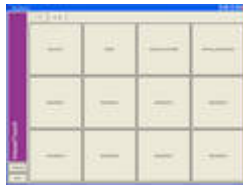
Night Vision 1



Night Vision 2



Day Vision 1



Day Vision 2

DUE TO CONTINUOUS IMPROVEMENTS, SPECIFICATIONS MAY CHANGE WITHOUT PRIOR NOTICE.