

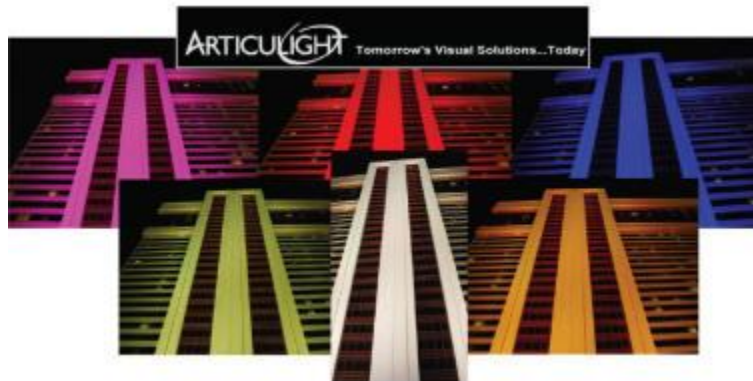
ARTICULIGHT

15-06 Morlot Avenue, Fair Lawn, NJ 07410 USA Tel: (201) 796-2690 Fax: (201) 796-8818
info@articulight.com articulight@aol.com www.articulight.com

LED SERIES

SPECTACOLOUR 270DD RGB

Long Throw Double Deck LED Color Changer



Aptly named, the SPECTACOLOUR 270DD RGB is an extremely bright LED-based RGB fixture designed for long throw applications and is powerful enough to illuminate large architectural facades or canvas entire stage areas. The SPECTACOLOUR 270 RGB utilizes the extremes of cutting edge LED technology and its rugged design allows installation in any environment. With an output of over 6,500 lumens and maximum projection distance of 500ft/150m, this

powerful fixture is perfectly suited for entertainment, architectural and architectural applications of any scale.

The new generation of powerful exterior lighting and color changing architectural wall washers is topped by the latest SPECTACOLOUR 270DD RGB, a high density LEDs double configuration modules range which features 3w 3 in 1 high power LEDs. The double cluster of LEDs configuration in the SPECTACOLOUR 270DD RGB offers full independent digital control of each LED array, allowing absolute freedom to create matching or divergent effects on formerly prohibitive large scale facades and remote spots.

The standard version with a combination of RGB LEDs (red, green and blue) offers an unprecedented astonishing rich saturated light output quality. Maintenance costs are significantly and dramatically reduced by the IP67 certified protection rating coupled with the very long life span of the latest solid state lighting package, as well as by the total absence of moving parts and color filters and by the convection cooling system for the added bonus of a totally silent operation. A variety of beam angles 10° as standard, 5°, 25° and 40° as optional are part of the optical group selection. We offer narrow beam for long throw, medium beam for medium throw and wide beam for flood/wash applications. A list of the various possibilities of beam angles is available below and we are open for customized beam angles where needed.

The two heads have an independent tilt that allows to lighting up wide big surfaces such as facades using lenses with different beam openings. For instance, it can be used with lenses with medium opening on one head to light up the lower part of a building or structure and at the same time it is possible to use narrow beam lenses to light up the rest of the building or structure. The SPECTACOLOUR 270DD RGB series can truly turn the newly illuminated areas into signature locations for an unparalleled standard defining architectural lighting achievement. The SPECTACOLOUR 270DD RGB is equipped with PWM. PWM (Pulse Width Modulation) driving electronics is currently the only optimal technology appropriate for LED drivers. Other manufacturers increase input electrical current to boost the brightness of LEDs, at the great expense of LED reliability. With transformers, if one LED burns out, the next LEDs in a series would pass out in succession. PWM eliminates those issues. The SPECTACOLOUR 270DD RGB has PWM electronics integrated to safeguard the longevity of LEDs.

The SPECTACOLOUR 270DD RGB is designed for outdoor and indoor applications. Suitable applications include wash and effect lighting for architectural, entertainment, display and retail uses. The SPECTACOLOUR 270DD RGB can be also installed for use in signage and advertising using the dynamic functions available with DMX 512 control. Direct input of DMX 512 signal allows the fixtures to be controlled from any DMX512 controller. The SPECTACOLOUR 270DD RGB can be operated as a single unit or in multiple units for large applications. Whether you are in a band, part of a stage performance or just want to add color washes with RGB infinite color mixing possibilities to any lighting installation, the SPECTACOLOUR 270DD RGB is the perfect solution to brilliantly light up any stage or surface.

The SPECTACOLOUR 270DD RGB is also performer friendly because it emits almost no heat onto the stage thus entertainers will stay cooler on stage. Just add the SPECTACOLOUR 270DD RGB punch and you have got the optimal stage light show! With a very long lamp life, the fixture will need virtually no servicing (only regular outside cleaning of front lenses to make sure light output is strong) and produces the highest quality of output without color fading.

The SPECTACOLOUR 270DD RGB has an auto switching power supply that can accommodate a wide range of voltages. The only thing necessary to do before powering on the unit is to make sure the line voltage supplied is within the range of the accepted voltages. The SPECTACOLOUR 270DD RGB will

accommodate between 80v and 240v AC. All fixtures must be powered directly off a switched circuit and can not be run off a rheostat (variable resistor) or dimmer circuit even if the rheostat or dimmer channel is used solely for 0% to 100% switch.

The SPECTACOLOUR 270DD RGB has been designed to replace 1800W HID CYM color changers. It brings to the table a lot of advantages among them flexibility of beam positioning, more lens options, greater creativity opportunities, higher light efficiency, greater energy saving, lighter weight, much higher IP rating, much lower power consumption, much higher lamp life all those factors resulting in an overall superior fixture that not only outperforms its 1800W HID CYM predecessor but also saves on many fronts. We are talking about 21st century fixture replacing a 20th century fixture.

In projects where there is no need for color change, and only static color is needed, the SPECTACOLOUR 270DD MONOCOLOR can be used to replace existing 1500W HID light source fixtures or where HID might have been considered. The SPECTACOLOUR 270DD MONOCOLOR has an advantage that it's simple to install, operate and maintain while projecting light that can reach up to 800 ft (244 meters) depending on color.

FEATURES AND BENEFITS

- Solid State Lighting, no moving parts
- PWM (Pulse Width Modulation) driving electronics
- Full RGB color mixing
- Over 16.7 million colors and hues possible
- Wireless DMX and RDM ready
- 3W 3 in 1 RGB LED technology for more uniform look
- Line voltage
- Excellent color display
- Low power consumption
- No fans
- Excellent heat management
- Energy consuming will reduce by 80% compare with the incandescence light in the same light effect
- Good anti-impact properties
- Elegant look and functional design
- No frequent twinkling
- Quadratic optics design
- No dizzying lights
- Good anti-impact with surface oxidation disposal
- Anti-aging with light leading inner teeth, soft beam, hard and durable
- DMX signal control
- Does not require repeat light bulb and ballast changes and lasts for an incredible >80,000 hours, which is many more times longer than other light sources.
- Cost-effectiveness on initial cost of fixture, bulb replacement and scheduled maintenance.
- Superior efficient lighting system
- Superb lumens' distribution
- Advance physical characteristics
- Durability and resistance to corrosion
- Lightweight and compact
- Simple installation and convenient modulation
- Ensures years of unsurpassed service, lighting uniformity, visual comfort and lighting security—all in a highly reliable system.
- No need for filters
- No motors to break
- Solid State Lighting, all Digital
- No Heat
- No UV

- No Infra Red
- No mercury
- Friendly Green Technology
- Safe
- Saves energy and saves money
- No CO2 effects
- Virtually No Maintenance
- Designed for permanent, semi-permanent and mobile applications
- Opening for greater creativity like never before
- Direct air convection for cooling
- Narrow, medium flood and flood options for wash or effect lighting
- Anti moisture techniques
- Homogenized beams coverage thanks to special light shaping diffusers
- Can be used both as a lighting upgrade for existing installs or for new installations
- Large handles on the sides for ease of portability and transportation enables only one person or maximum two to carry it
- Record the running time of the different colorful LEDs
- Record the total running time of the fixture
- Power supply and electronics are housed in a base box separately from the LED light source ensuring there is no overheating of the components resulting in greater reliability, performance and longer life of the system
- The base and the heads are separate enabling ease of operation in case either will have to be serviced or replaced.

TECHNICAL SPECIFICATIONS

Light Source: 3W, 3 in 1 LEDs (standard)

LED Quantity: 45 on each deck for total of 90 pieces

Color System: 1 in 3 RGB color mixing at the source, generating uniform beam and producing over 16 million colors.

RGBW and RGBA and RGBWA as well as single color static (red, green, blue, amber, white) and bi-color are available as options.

Operation Modes: DMX, Master/Slave, Auto

DMX Channels: 11

Connection: DMX in/out, power cord in (both waterproof)

Input voltage: 80-240V AC

Power Consumption: 274W (maximum when all RGB are on at full capacity)

Driver: 900mA

PWM Technology (Pulse Width Modulation) : yes

Popular Beam Angles: 5°, 10°, 25°, 40° and 60° as well as combinations of those. Extended list of possibilities:

The projectors can come in a variety of ways on any of these angles:

95°x60°, 95°x35°, 75°x35°, 60°x10°, 60°x1°, 40°x0.2°, 30°x5°, 80°, 60°,

40°, 30°, 20°, 10°, 5°, 1°

The LED Optical Beam angle is larger than the film beam angle the only net effect is homogenization of the RGB.

If the lens angle of the LED is smaller, the films will enlarge the angle.

For example, LED lens 6-degree with 20 degree film will yield a 20 degree light distribution pattern.

A 6 degree lens and a 60 x 1 degree film will result in a 60 degree by 6 degree line.

Special beam angles can be customized.

Single Head Adjustable Angle: 0° - 90°

Tilt (manual): -35° - 130°

Fixture Housing: Die-cast powder coated aluminum heads with steel base

Finish: black (standard), white or gray (optional), custom colors available. For applications with hot climate we recommend using

the lighter finishes such as white or gray for better heat dissipation

where as for applications in cold climate any of the finishes will do.

Front Lens Cover: Toughened glass

Dimensions: Please see below.

Weight: 27.5 Kgs (60.5 lbs)

Ambient temperatures: -25°C to 40°C (-13°F – 104°F)

Operating temperatures: TJ 70-77°C (170.6°F)

Cooling: Thermally managed by heat transfer

Mounting options: Direct to concrete fixed, or clamp to pipe

IP Rating: IP67 <http://articulight.com/acc/IPRatings.html>

Listings: CE, ETL/UL (pending). Meets and exceeds international safety standards.

Warranty: 2 Years (standard). Extended warranty: available at extra cost.

DMX CHANNELS

Ch 1: Shutter

Ch 2: Dimmer

Ch 3: Red (upper head)

Ch 4: Green (upper head)

Ch 5: Blue (upper head)

Ch 6: Red (lower head)

Ch 7: Green (lower head)

Ch 8: Blue (lower head)

Ch 9: Color Temperature

Ch 10: Macro Channel

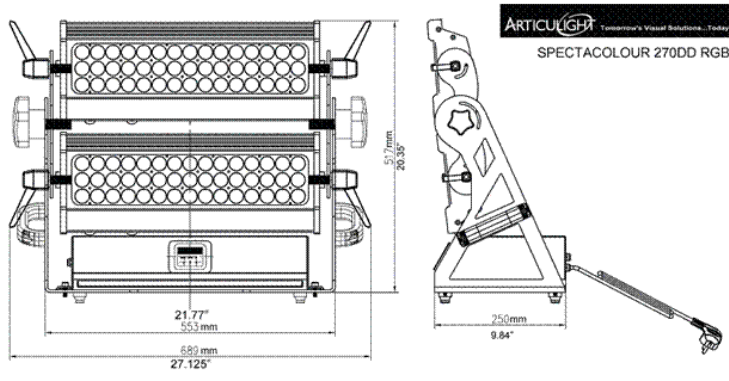
Ch 11: White Balance Control

APPLICATIONS

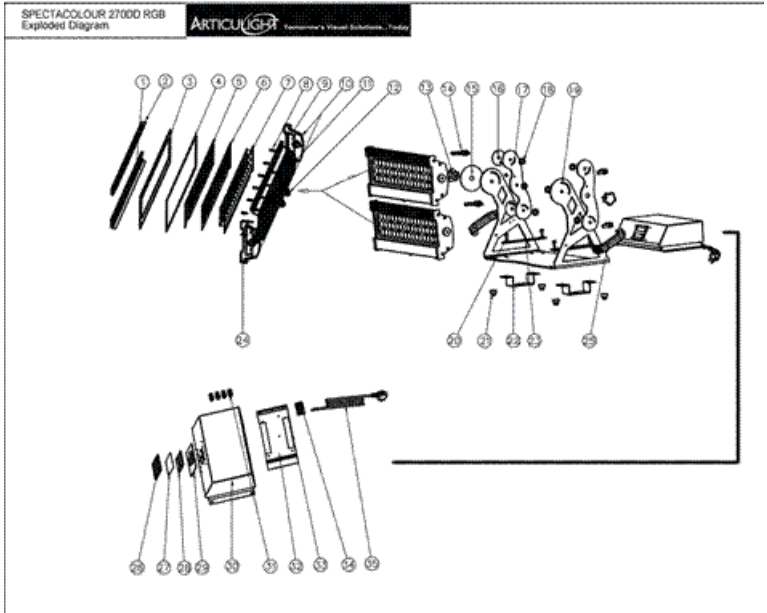
- Towers
- High Risers
- Skyscrapers
- Stadiums
- Arenas
- Hotels
- Casinos
- Bridges
- Monuments
- Facades
- Buildings

- Amusement Rides
- Houses of Worship
- Large Retail Exteriors
- Piers
- Themed attractions
- Amusement Parks
- Landscape
- Museums
- Events
- Concerts
- Fountains
- Pools
- Ponds
- Lakes
- Signs
- Billboards
- And much more

DIMENSIONS DRAWING



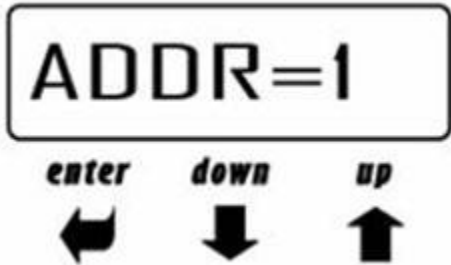
EXPLODED DRAWING



MOUNTING OPTIONS

FLOOR, TRUSS, WALL, CEILING AND ROOF

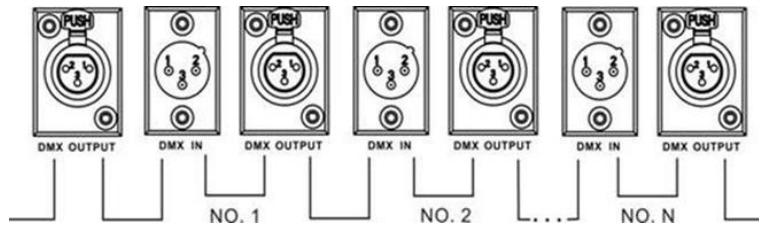
DISPLAY PANEL



1 : LED Matrix display 3: down

2 : enter 4 : up

CONNECTION



BRAND NEW!!

RELATED PRODUCT

SPECTACOLOUR 135SD RGB

SINGLE DECK

PLEASE CONTACT US FOR MORE DETAILS.



DUE TO CONTINUOUS IMPROVEMENTS, SPECIFICATIONS MAY CHANGE WITHOUT PRIOR NOTICE.